

THE NEWSLETTER  
FOR THE SOUTH EAST REGION

WEB SITE:  
[www.southeastembroiderers.co.uk](http://www.southeastembroiderers.co.uk)

ISSUE NUMBER 20 JANUARY 2016



Embroiderers' Guild

sharing opportunities for discovery and creativity

## SEE THE NEWS!

Hello,

Our most recent Regional event was the AGM in September at Brighton and it was a lovely day. The members of Brighton and Worthing Branches did the region proud. The AGM went off well (pew!) and Trustee Gill Drury brought us to date with the business of the guild.

Jen Ford stood down as Secretary and Heather Starbuck has taken over that role, but the committee hasn't lost Jen's valuable knowledge as she was co-opted back onto the committee to continue servicing branch communications.

There was a great selection of traders, tea, coffee and cakes available all day and the afternoon speaker, Sophie Long, gave us an insight into her life as a professional embroiderer and described how she has developed her career.

The Coats competition for individual members exhibited some lovely entries and was won by Carolyn Gibbs of Horsham branch.

At the beginning of September the regional committee was offered space at The Sandown Crafts show. We were given a huge stand and were able to hold small workshops on a variety of techniques, an exhibition area and an advice clinic. The stand and workshops generated a lot of interest, so much so that on Friday we decided to make one of the workshops an all day drop in workshop. The stewards were kept busy all the time answering questions and giving advice and although we may not have gained any members we felt that the art of textiles and embroidery was well represented, in what is mainly a craft show. Thanks to all who helped over the three days, in setting up and dismantling our display, and in stewarding and running workshops.

I know many branches are working hard on their entries for the Regional Challenge and for the various Capability Brown exhibitions that are planned this year.

There is a lot to look forward to in 2016, both nationally and within the region, so I hope to see you somewhere. Look out for some of the embroidery exhibitions throughout the year at National Trust properties, celebrating Capability Brown's genius (the Guild website will be listing all events), and join us if you can at our Regional Day and our summer school.

**Kay Dennis**  
Chairman

**Embroiderers' Guild  
SOUTH EAST REGION SUMMER SCHOOL 2016**

**ROFFEY PARK INSTITUTE  
Horsham, West Sussex RH12 4TB**

**JUNE 17th TO 19th 2016**

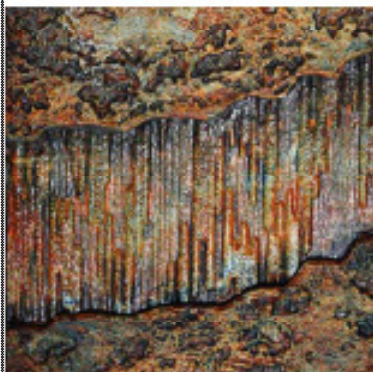
**A WEEKEND OF INSPIRATION!**



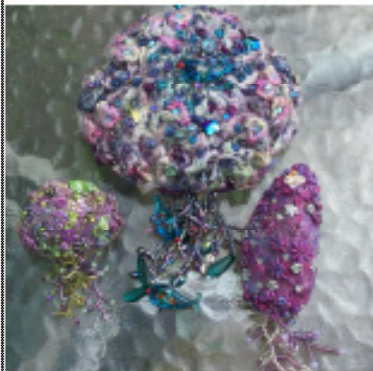
**WITH OUR TUTORS**

**Jenny Adin-Christie**

**Botanical Studies on Silk Organza**



**Lynda Monk  
Fabulous Surfaces**



**Pauline Spence  
Mermaids Purses**



**Booking Details**

**Booking forms available from Heather Starbuck**

**e mail [heatherjstarbuck@yahoo.co.uk](mailto:heatherjstarbuck@yahoo.co.uk)**

**37 West Way, High Salvington, Worthing BN13 3AX**

**please enclosed a stamped addressed envelope if applying by post**

**Non-members of the Embroiderers' Guild are welcome to join us if  
there are spaces left after April 2016.**

## **SE REGION NEWS**

### **17th - 19th June 2016 - Summer School**

Roffey Park Institute, Forest Road, Horsham, West Sussex, RH12 4TB  
[www.roffeypark.com](http://www.roffeypark.com) (link to virtual tour via [www.southeastembroiders.co.uk](http://www.southeastembroiders.co.uk))  
Plenty of places still available for Pauline Spence (google for samples of her work)  
Four places available for both Jenny Adin-Christie ([www.jennyadinchristieembroidery.co.uk](http://www.jennyadinchristieembroidery.co.uk))  
and Lynda Monk ([www.purplemissus.com](http://www.purplemissus.com))  
Any spaces left after April, will be offered to members outside the region  
and to non members of the Guild.

### **9th July 2016 - Regional Day**

Village Community Centre, Forstal Road, Aylesford ME20 7AU  
Regional Challenge for Branches

#### **'Inspired By Royal Jewels' (The World is your Oyster)**

Size: exhibit to occupy a space no larger than 2 feet x 3 feet with no overhanging.

Exhibits will be marked on the following (maximum 20 marks):

Design and use of colour (5); Suitability of materials (3)

Techniques and workmanship (9); Finish and presentation (3)

The independent judges will fill in cards that will be given to the  
competing Branch to which they refer.

The results together with marking will be announced on the day  
and published in the next Newsletter.

There will be at least one independent judge.

Deadline for Entry: 1st June 2016

Branches should have entry form)

### **24th September 2016 - AGM**

Village Hall, Church Lane, Petham, Near Canterbury, Kent CT4 5RD

Speaker: Janet Clare

[www.janetclare.co.uk](http://www.janetclare.co.uk)

#### Coats Competition for Branch Members

Coats Branch members competition South East Regional AGM

#### **'Skyline'**

Size: exhibit not to exceed 30 cm x 30 cm including any frame and should be unglazed.

Any three dimensional pieces should be able to be displayed free standing and entrant is  
responsible for providing and support/platform which may be required.

Design is entirely up the entrant providing the above criteria are met.

Exhibits will be marked on the following (maximum 20 marks):

Design and use of colour (5); Suitability of materials (3)

Techniques and workmanship (9); Finish and presentation (3)

The independent judges will fill in cards that will be given to the  
competing member or Branch to which they refer.

The results together with marking will be announced on the day  
and published in the next Newsletter.

There will be at least one independent judge.

Deadline for Entry: 10th September 2016

(Branches should have forms already for members to use)

## Iford & Swanborough Community Embroidery

On 28 June 2015 three embroidered panels depicting the villages of Iford and Swanborough were unveiled in St Nicholas Church – the culmination of about four years' work. The original concept came from a neighbour (and patchwork devotee) who went to a free embroidery workshop in Brighton and came back enthused with the idea of a group working cooperatively on a textile piece. I embraced the idea because it was something I had wanted to do for a long time, and we both thought it might offer a way for people from Swanborough and Iford to come together to celebrate the special nature of the beautiful place we all live in.

I put forward the idea at a Parish Meeting and residents welcomed the idea which enabled us to operate as a sub-group under the auspices of the Parish Meeting which was essential when applying for grants. As luck would have it, also present was Jan Knowlson who had come to talk to us about her work as a Ranger with the South Downs National Park Authority. She suggested that we should apply for a grant under their Sustainable Communities Fund with the help of another friend with plenty of experience in applying for grants, we secured an offer of £550 to cover the cost of materials and two craft lights to enable us to work throughout the winter, matching colours accurately. I was already involved with the Battle of Lewes 'Tapestry' and soon decided that we could benefit from all the research their working group had done into choosing suitable materials, etc. As a result, we chose the same Belfast linen canvas and English-spun wool yarns, dyed with natural dyes by a company in the French Pyrenees called Renaissance Yarns. Luckily we were able to borrow frames which helped with the budget.



### **Unveiling the Panels in St Nicholas Church, Iford**

From left Cllr Ruth O'Keeffe – Chair of Town Council, Sheila Robinson in whose home most of the group stitching went on, Neville Harrison (South National Park Authority – major funder, myself, Jan Knowlson (SDNP Ranger).

Although we are a small community we have lots of talented residents and were lucky to get a local artist and illustrator to produce a pen and water-colour design without a fee. She took our brief of a bird's-eye view from the Downs and ingeniously depicted all our homes, nestling in the beautiful farmed landscape. There are around 80 buildings so the scale requires very small stitches. We employed couching, stem stitch, straight stitch and French knots for the most part and the natural colours of the yarns gave us plenty of scope to choose terracotta, brown and grey shades to illustrate the variety of building materials, the trees and hedges. The design also incorporates farm and wild animals and birds.

We needed somewhere to stitch and, ideally, to keep the three frames and two lamps. We were very lucky to be invited to base ourselves in the home of an elderly lady who lives in the heart of the village and who allowed us to virtually take over her dining-room so most of the 170 sessions that it has taken us to complete the work took place there. She lives alone and appreciated having some company for an afternoon each week.

In order to interpret the original design, we took a lot of photographs and occasionally jumped up from a frame to go and look at one of the houses or the Church in detail. There was a lot of discussion about the precise stitch and colour to use to represent flint, brick, tile, etc and this made us look very closely at each building. We came to the project with varying levels of skill and experience and I held informal workshops to teach specific stitches where necessary, using the experience I had gained as a supervisor on the Battle of Lewes panels.

About 20 women contributed, half of whom formed the main group while the others stitched on far fewer occasions. We all learned from the shared experience and were overjoyed to complete the embroidery earlier this year. However, we encountered some technical problems in mounting the panels and were very grateful to a retired textile teacher from Lewes who generously came and instructed us and worked with us to accomplish that demanding task.

Wherever a group of women get together, you expect some lively chatter and we certainly enjoyed that. However, during the four years or so that we have been working on the embroidery, members of the group have had to cope with personal crises, illness and bereavement, and we have supported each other through those. We have now formed a "Knit and Natter" group so that we can bring our own quilting, knitting or embroidery to meetings and continue the friendships we have formed.

**Jan Newbury**  
Brighton Branch.

*Editor's Note:*

*My apologies that this newsletter is going out much later than the committee planned; this was entirely my fault.*

*Our Regional Newsletter is a great forum to advertise your branch exhibitions, special events, anniversaries etc. Do make sure you advise Kay Dennis so that information can be posted on the Regional web site.*

*Hope to hear from branches and members about their work on Capability Brown projects and any visits to exhibitions for the next newsletter.*

**Contact The Editor with any contributions!**

**Janet Brown on 01403 256973 or 07801 137349 or at [janet-brown@btconnect.com](mailto:janet-brown@btconnect.com)**